

# clever



## 6A Mount Street

, Plymouth, PL4 8NZ

**£159 Per week**



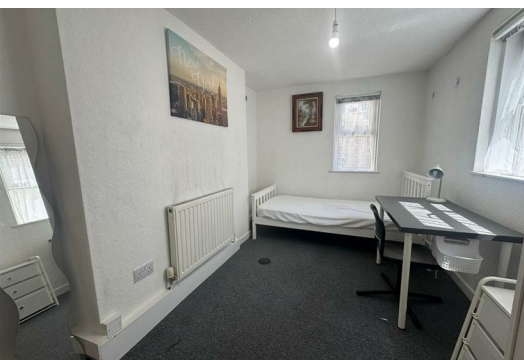
NEW PROPERTY, BE QUICK!

Nestled in the vibrant area of Mount Street, Plymouth, this newly listed two-bedroom flat presents an excellent opportunity for students seeking comfortable and convenient accommodation.

The flat features two good sized bedrooms, a functional kitchen, equipped to meet your culinary needs, and a modern bathroom complete with a shower over the bath, ensuring both practicality and comfort. Additionally, residents can enjoy access to a charming courtyard area, providing a delightful outdoor space to unwind or socialise with friends.

With its prime location, this student property is ideally situated for easy access to local amenities, transport links, and the bustling university life that Plymouth has to offer. This flat is a fantastic choice for those seeking a blend of comfort and convenience in a lively student community. Don't miss the chance to make this lovely flat your new home.

Available from 1ST OF SEPTEMBER 2026!  
44 week tenancy @ £159 pp pw



Area Map



Floor Plans



Energy Efficiency Graph



These particulars, whilst believed to be accurate are set out as a general outline only for guidance and do not constitute any part of an offer or contract. Intending purchasers should not rely on them as statements of representation of fact, but must satisfy themselves by inspection or otherwise as to their accuracy. No person in this firms employment has the authority to make or give any representation or warranty in respect of the property.